

FIRST FLOOR PLAN - MAJESTIC NORTH

Scale: 1/16" = 1'-0"



Johannes Cohen

COLLABORATIVE
Architecture Planning
Interior Design
Landscape Design

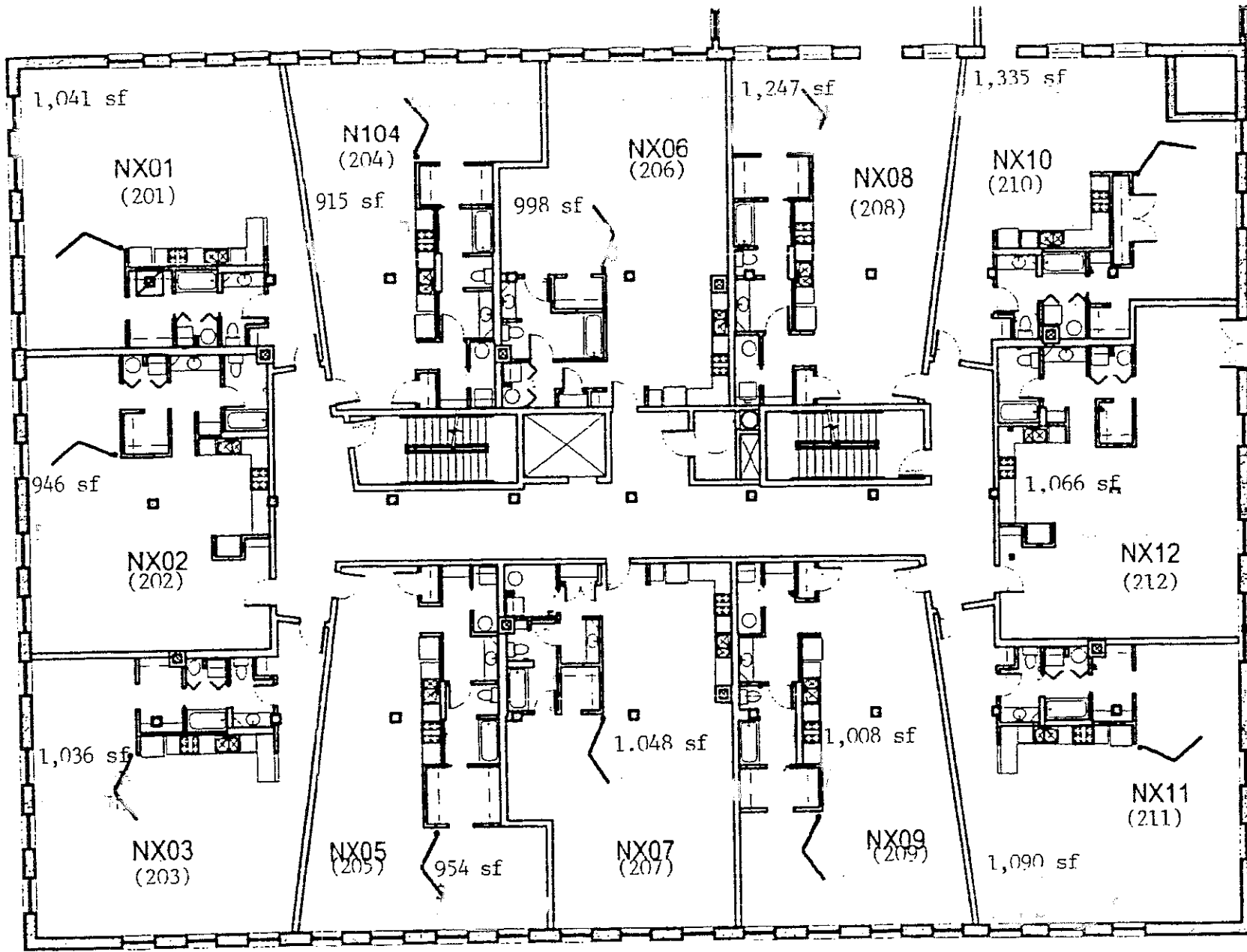
6225 Delmar Blvd., St. Louis, MO 63130
Phone: 314.775.4545 Fax: 314.775.3060
Email: johanc@johannes-cohen.com

Majestic Stove Lofts

2017 Washington Avenue, St. Louis, Missouri 63103
MAJESTIC STOVE LOFTS L.P.
ROBERT WOOD REALTY COMPANY

ISSUE DATE
7 JUNE 2004

7



2ND-5TH FLOOR PLAN - MAJESTIC NORTH

Scale: 1/16" = 1'-0"



Majestic Stove Lofts

2017 Washington Avenue, St. Louis, Missouri 63103
 MAJESTIC STOVE LOFTS L.P.
 ROBERT WOOD REALTY COMPANY

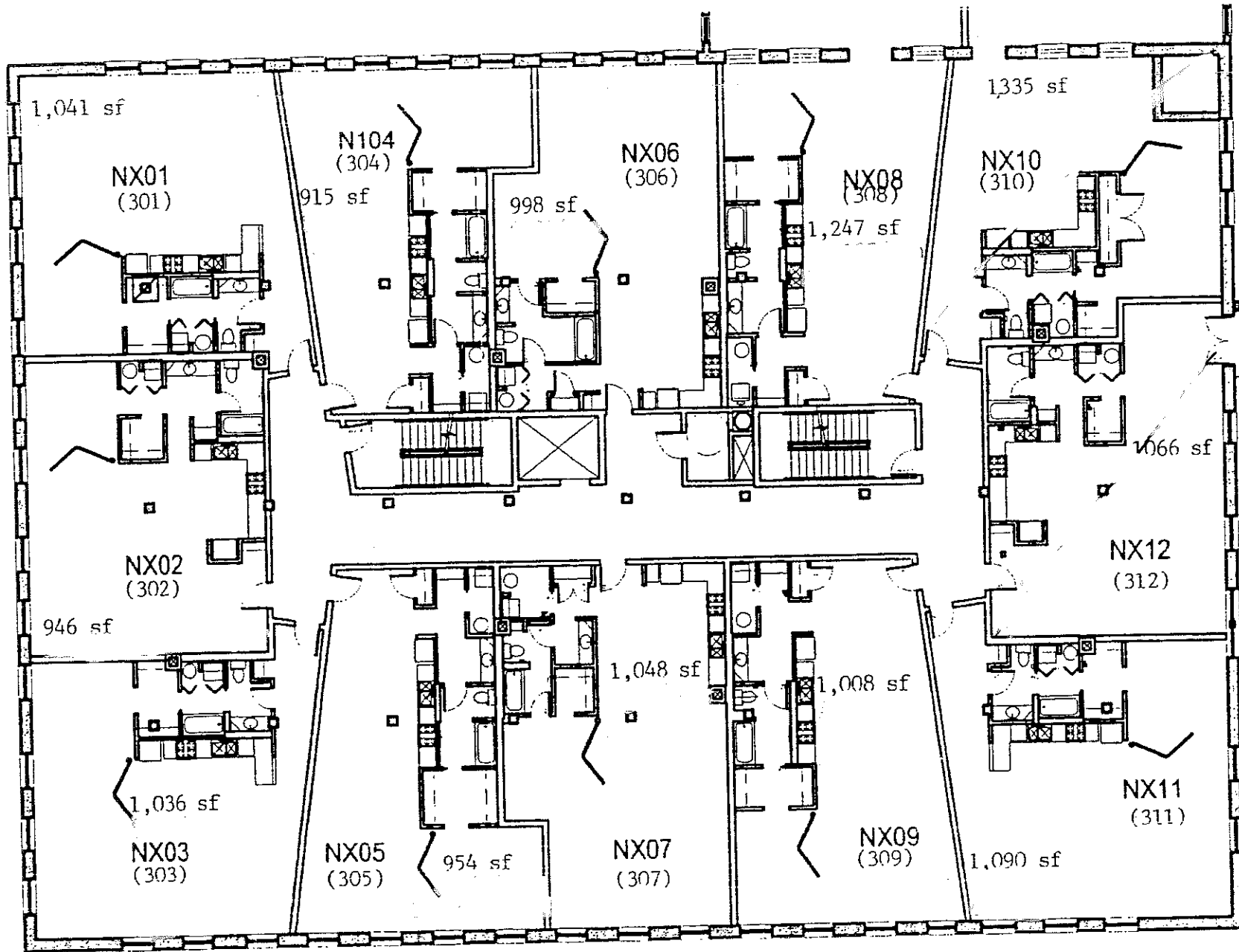
Johannes Cohen

COLLABORATIVE
 Architecture Planning
 Interior Design
 Landscape Design

4235 Delmar Blvd., St. Louis, MO 63130
 Phone: 314.723.4545 Fax: 314.723.3060
 Email: johannes@johannes-cohen.com

ISSUE DATE:
 7 JUNE 2004

8



2ND-5TH FLOOR PLAN - MAJESTIC NORTH

Scale: 1/16" = 1'-0"



Johannes Cohen

COLLABORATIVE
Architecture Planning
Interior Design
Landscape Design

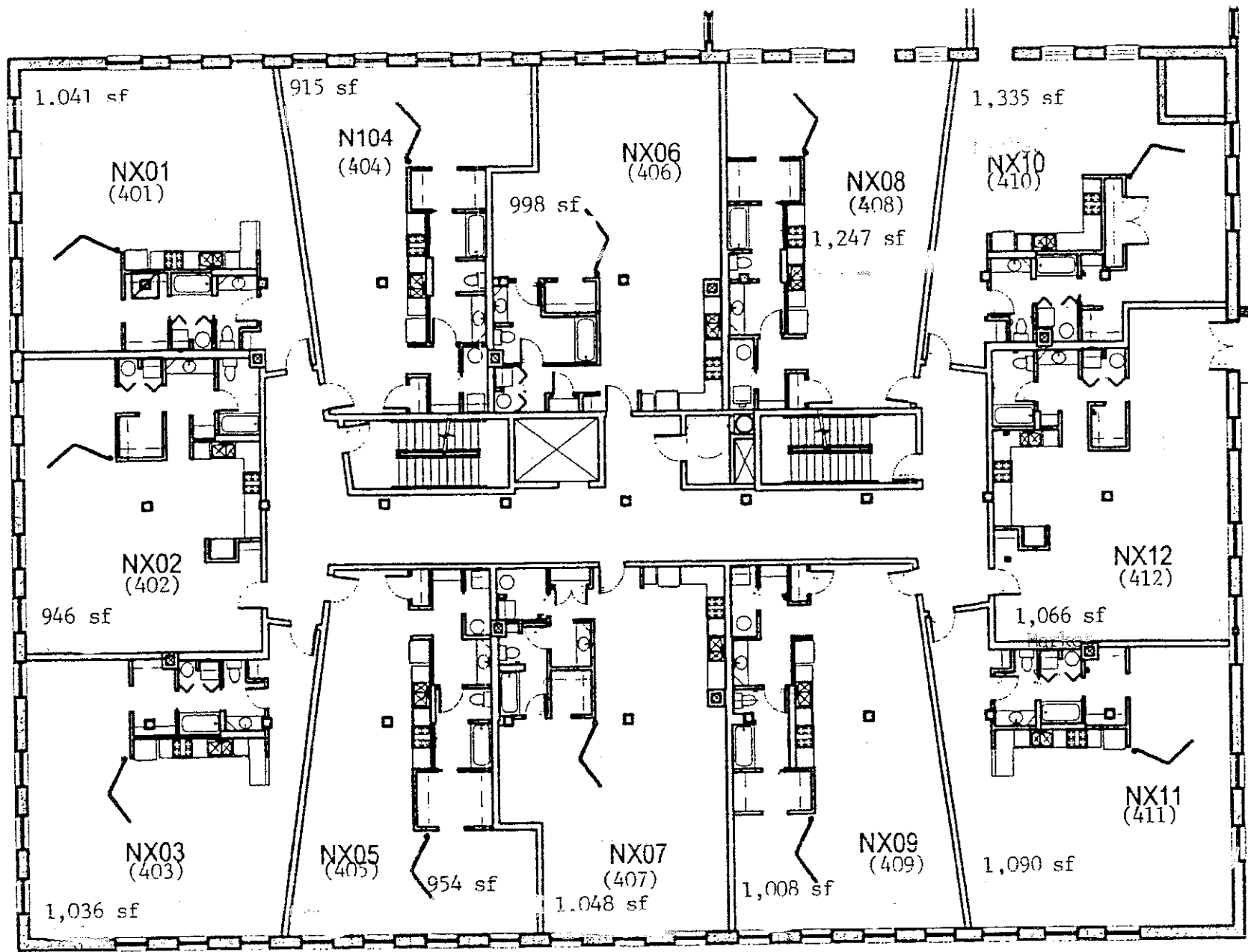
6225 Delmar Blvd., St. Louis, MO 63130
Phone: 314.725.4365 Fax: 314.725.3060
Email: jcohen@johannes-cohen.com

Majestic Stove Lofts

2017 Washington Avenue, St. Louis, Missouri 63103
MAJESTIC STOVE LOFTS L.P.
ROBERT WOOD REALTY COMPANY

ISSUE DATE:
7 JUNE 2004

8



2ND-5TH FLOOR PLAN - MAJESTIC NORTH

Scale: 1/16" = 1'-0"



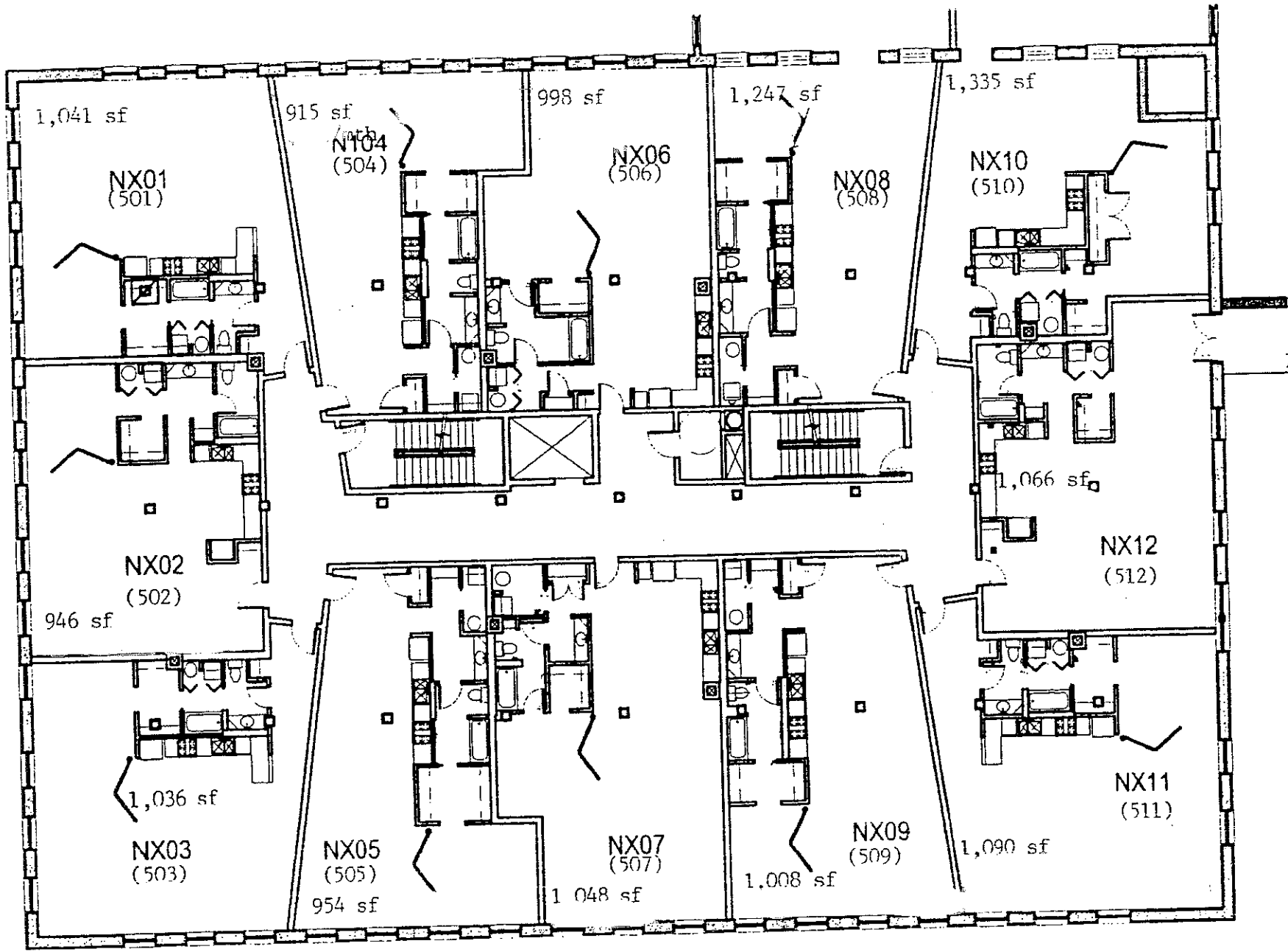
Johannes Cohen
COLLABORATIVE
Architecture Planning
Interior Design
Landscape Design

6235 Delmar Blvd., St. Louis, MO 63130
Phone: 314.725.4565 Fax: 314.725.3060
Email: jcc@johannes-cohen.com

Majestic Stove Lofts
2017 Washington Avenue, St. Louis, Missouri 63103
MAJESTIC STOVE LOFTS L.P.
ROBERT WOOD REALTY COMPANY

ISSUE DATE:
7 JUNE 2004

8



2ND-5TH FLOOR PLAN - MAJESTIC NORTH

Scale: 1/16" = 1'-0"



Johannes Cohen

COLLABORATIVE
Architecture Planning
Interior Design
Landscape Design

6235 Delmar Blvd., St. Louis, MO 63130
Phone: 314.725.4545 Fax: 314.725.3060
Email: jcohen@johannescohen.com

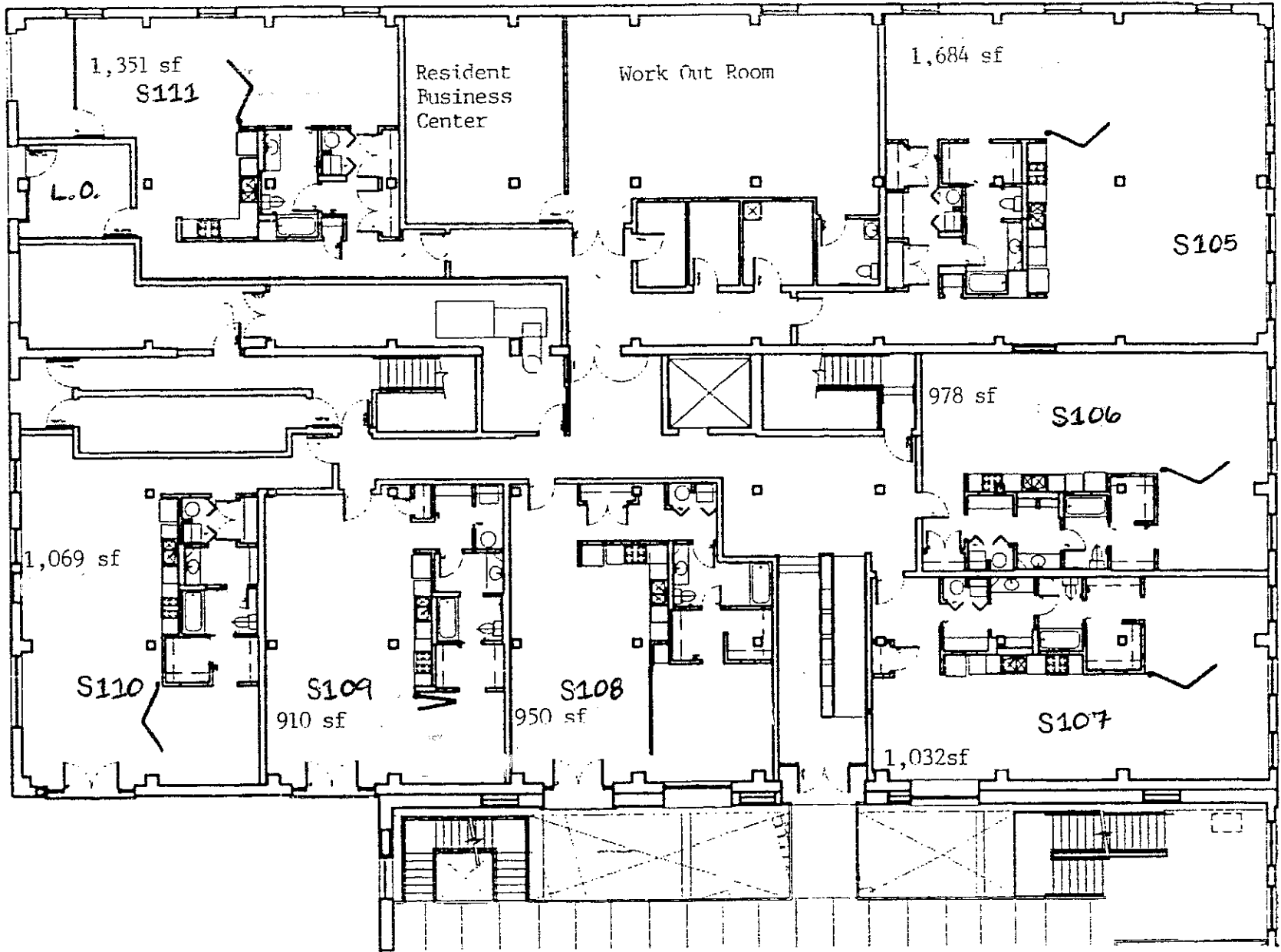
Majestic Stove Lofts

2017 Washington Avenue, St. Louis, Missouri 63103
MAJESTIC STOVE LOFTS L.P.
ROBERT WOOD REALTY COMPANY

ISSUE DATE:
7 JUNE 2004

8

20th ST.



FIRST FLOOR PLAN - MAJESTIC SOUTH

Scale: 1/16" = 1'-0"



Johannes Cohen

COLLABORATIVE
Architecture Planning
Interior Design
Landscape Design

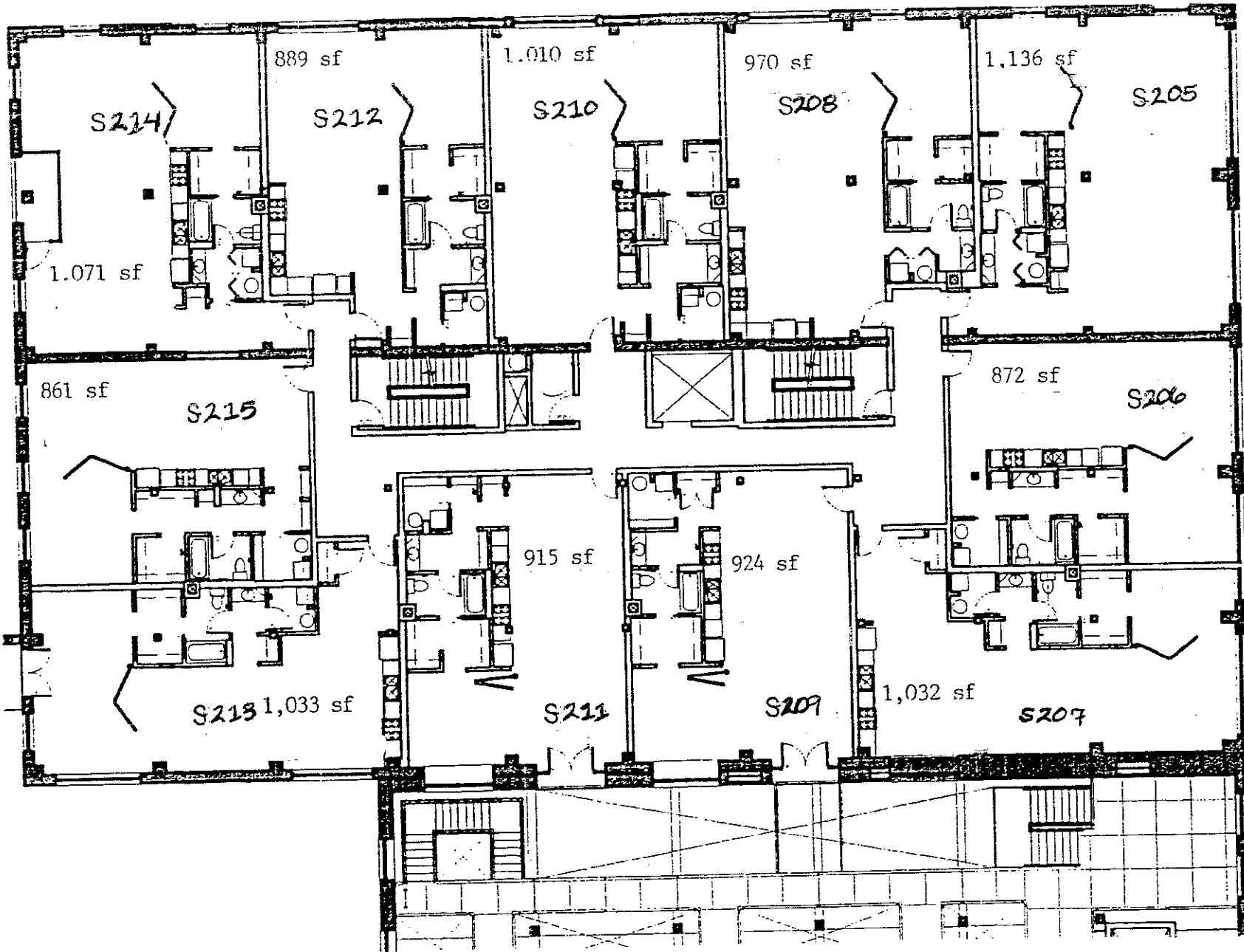
6225 Deiker Blvd., St. Louis, MO 63130
Phone: 314.723.4545 Fax: 314.723.3060
Email: jcohen@johannescohen.com

Majestic Stove Lofts

2017 Washington Avenue, St. Louis, Missouri 63103
MAJESTIC STOVE LOFTS L.P.
ROBERT WOOD REALTY COMPANY

ISSUE DATE
7 JUNE 2004

4



SECOND FLOOR PLAN - MAJESTIC SOUTH

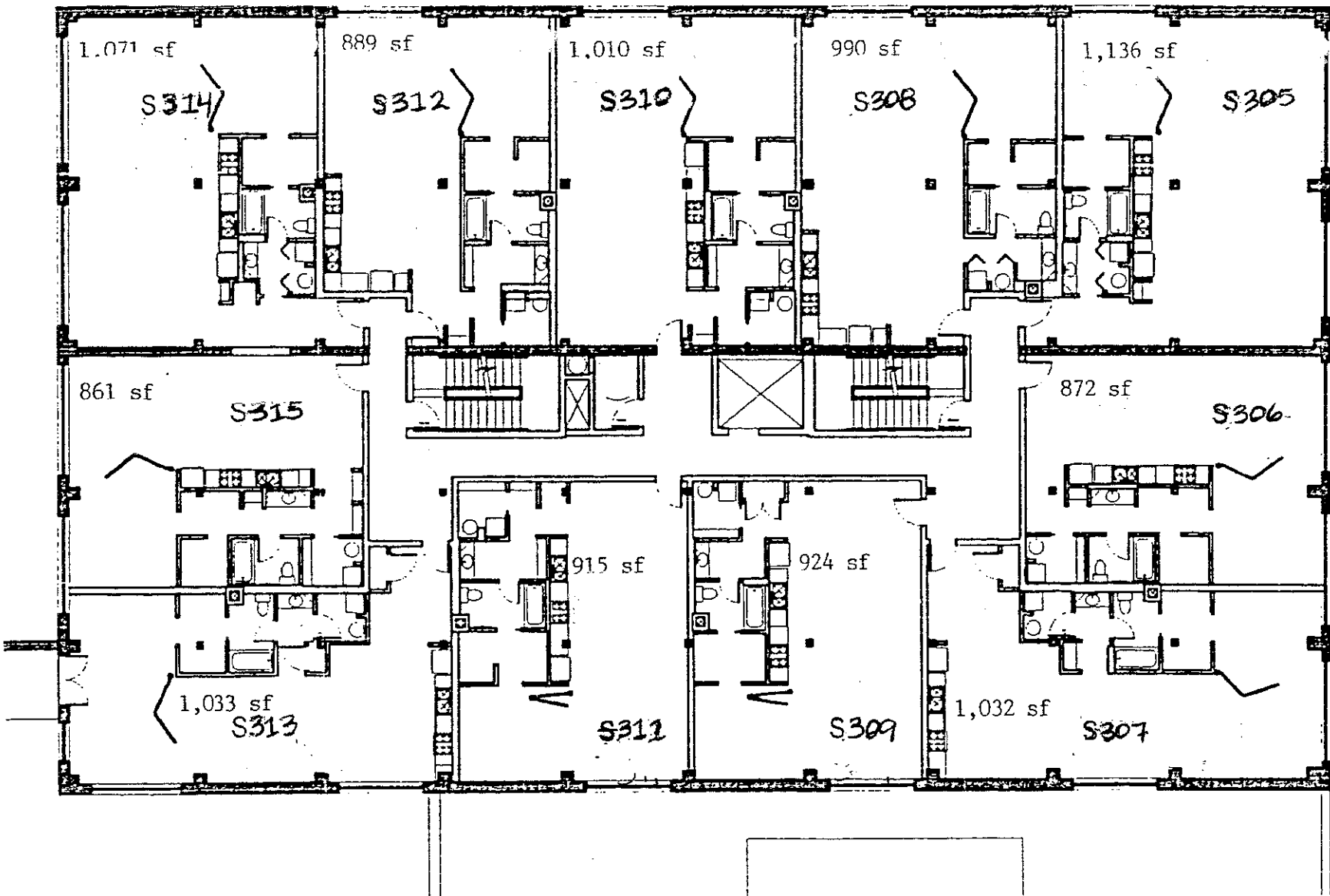
Scale: 1/16" = 1'-0"



Johannes Cohen
 COLLABORATIVE
 Architecture Planning
 Interior Design
 Landscape Design
 6215 Delmar Blvd., St. Louis, MO 63130
 Phone: 314.725.4545 Fax: 314.725.9060
 Email: johannes@johannes-cohen.com

Majestic Stove Lofts
 2017 Washington Avenue, St. Louis, Missouri 63103
 MAJESTIC STOVE LOFTS L.P.
 ROBERT WOOD REALTY COMPANY

ISSUE DATE:
 7 JUNE 2004
5



3RD-5TH FLOOR PLAN - MAJESTIC SOUTH

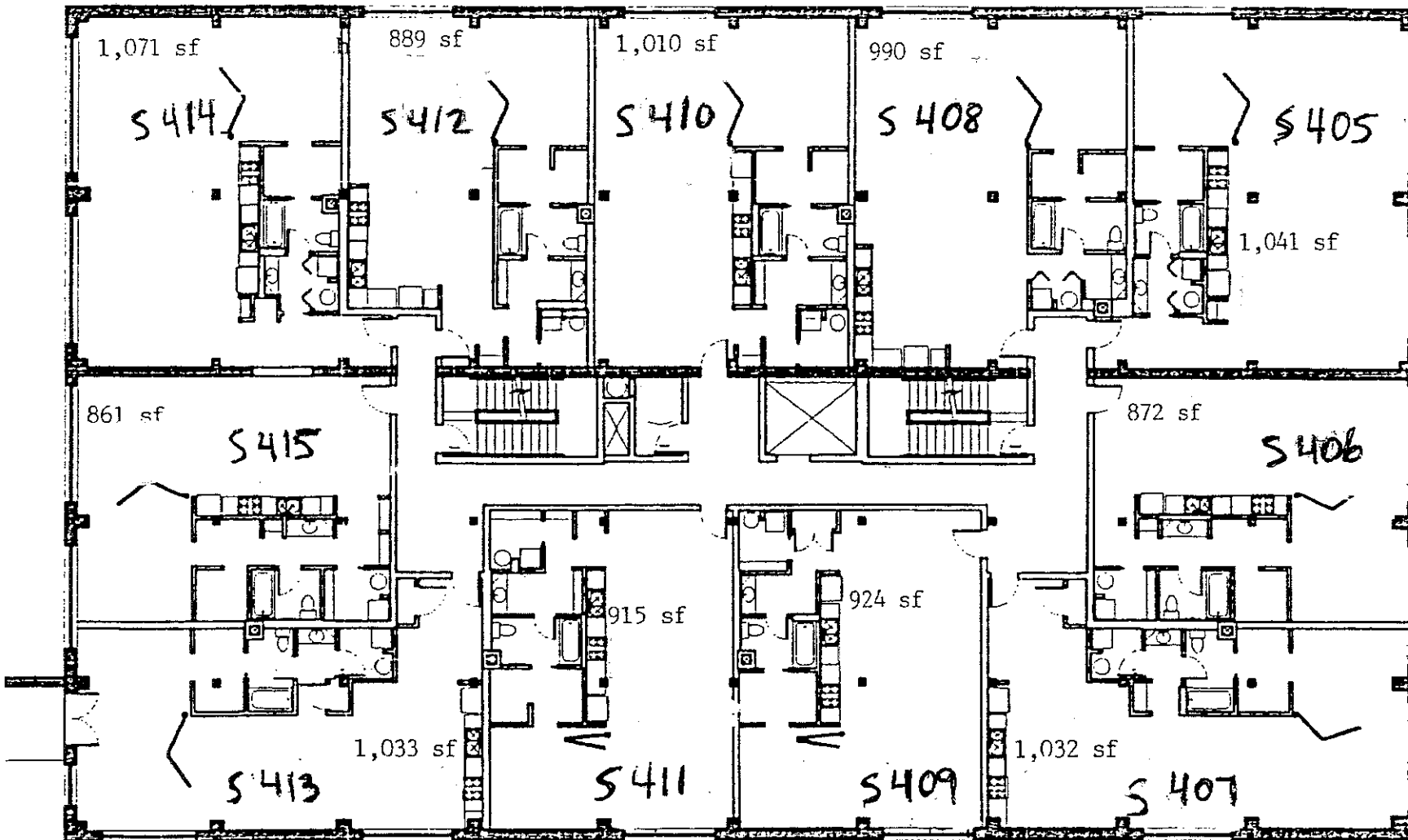
Scale: 1/16" = 1'-0"



Johannes Cohen
 COLLABORATIVE
 Architecture Planning
 Interior Design
 Landscape Design
 6225 Oakleaf Blvd., St. Louis, MO 63136
 Phone: 314.725.4545 Fax: 314.725.3060
 Email: johann@johannes-cohen.com

Majestic Stove Lofts
 1017 Washington Avenue, St. Louis, Missouri 63103
 MAJESTIC STOVE LOFTS L.P.
 ROBERT WOOD REALTY COMPANY

ISSUE DATE
 7 JUNE 2004
6



3RD-5TH FLOOR PLAN - MAJESTIC SOUTH

Scale: 1/16" = 1'-0"

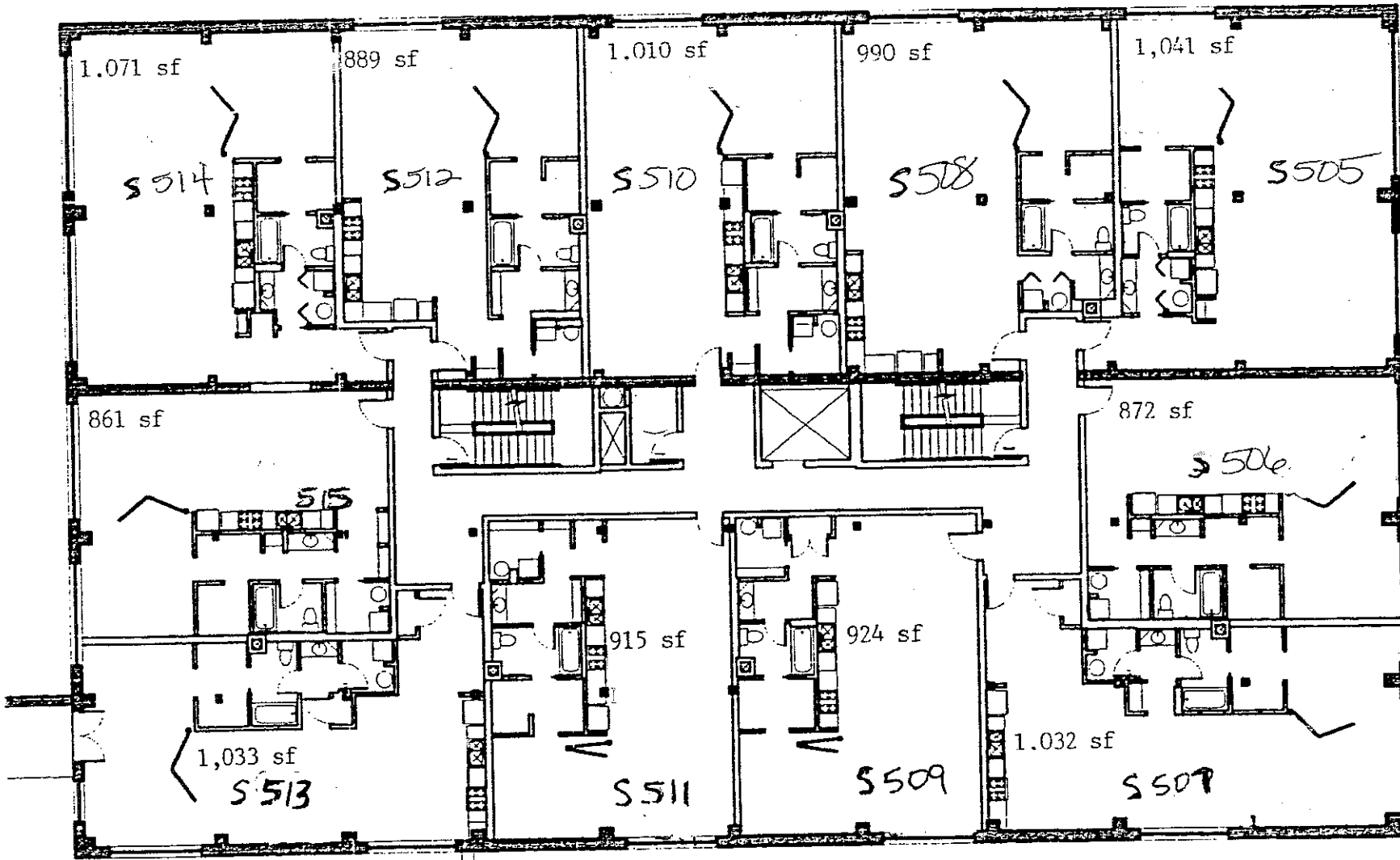


Johannes Cohen
 COLLABORATIVE
 Architecture Planning
 Interior Design
 Landscape Design

6223 Delmar Blvd., St. Louis, MO 63130
 Phone: 314.725.4565 Fax: 314.725.3060
 Email: johnc@johannes-cohen.com

Majestic Stove Lofts
 2017 Washington Avenue, St. Louis, Missouri 63103
 MAJESTIC STOVE LOFTS L.P.
 ROBERT WOOD REALTY COMPANY

ISSUE DATE
 7 JUNE 2004
 6



3RD-5TH FLOOR PLAN - MAJESTIC SOUTH

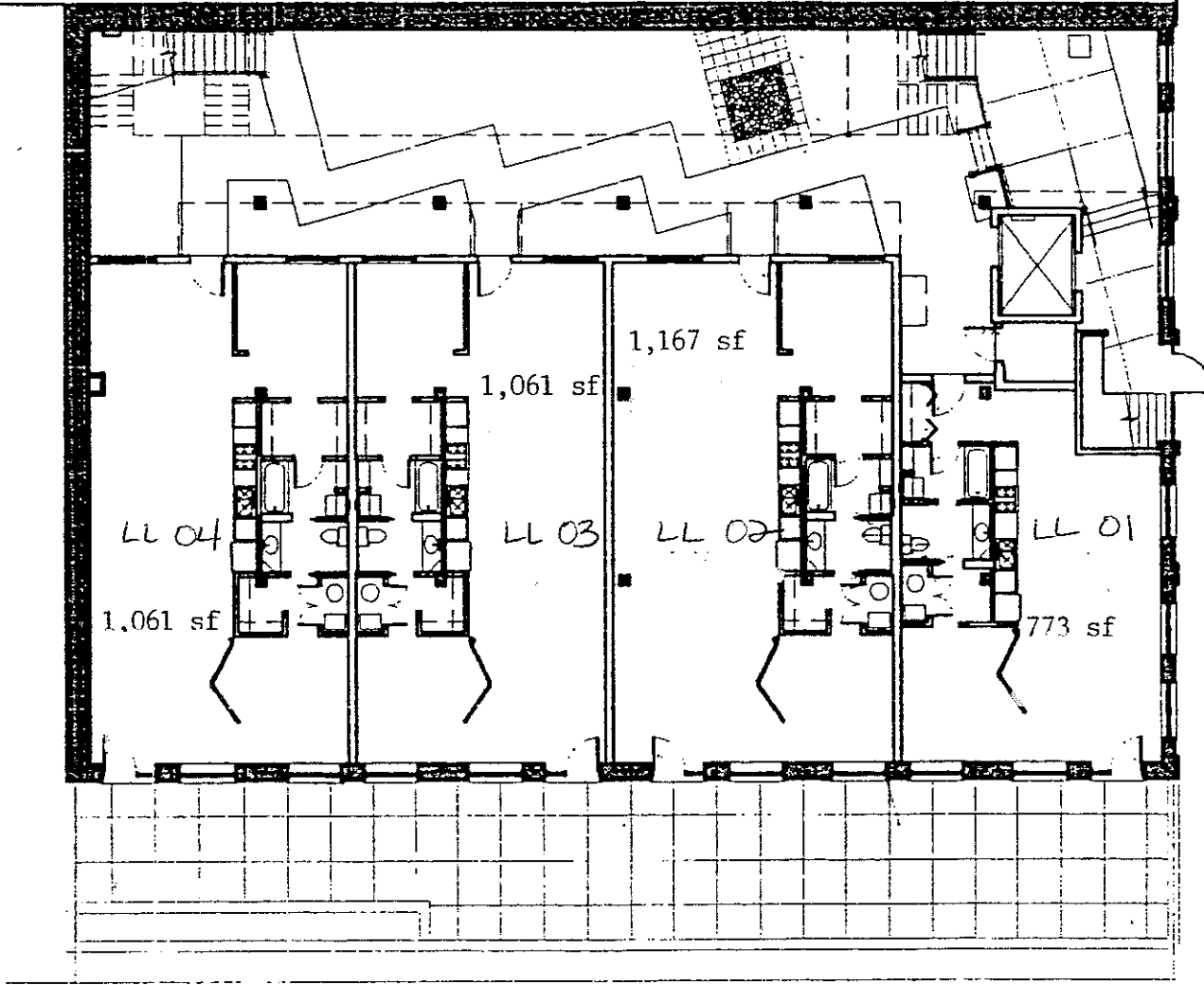
Scale: 1/16" = 1'-0"



Majestic Stove Lofts
 2017 Washington Avenue, St. Louis, Missouri 63103
 MAJESTIC STOVE LOFTS L.P.
 ROBERT WOOD REALTY COMPANY

Johannes Cohen
 COLLABORATIVE
 Architecture Planning
 Interior Design
 Landscape Design
 6225 Delmar Blvd., St. Louis, MO 63130
 Phone: 314.725.4545 Fax: 314.725.3660
 Email: jcohen@johannes-cohen.com

ISSUE DATE
 7 JUNE 2004
6



LOWER LEVEL PLAN - LEAVITT BOX

Scale: 1/16" = 1'-0"

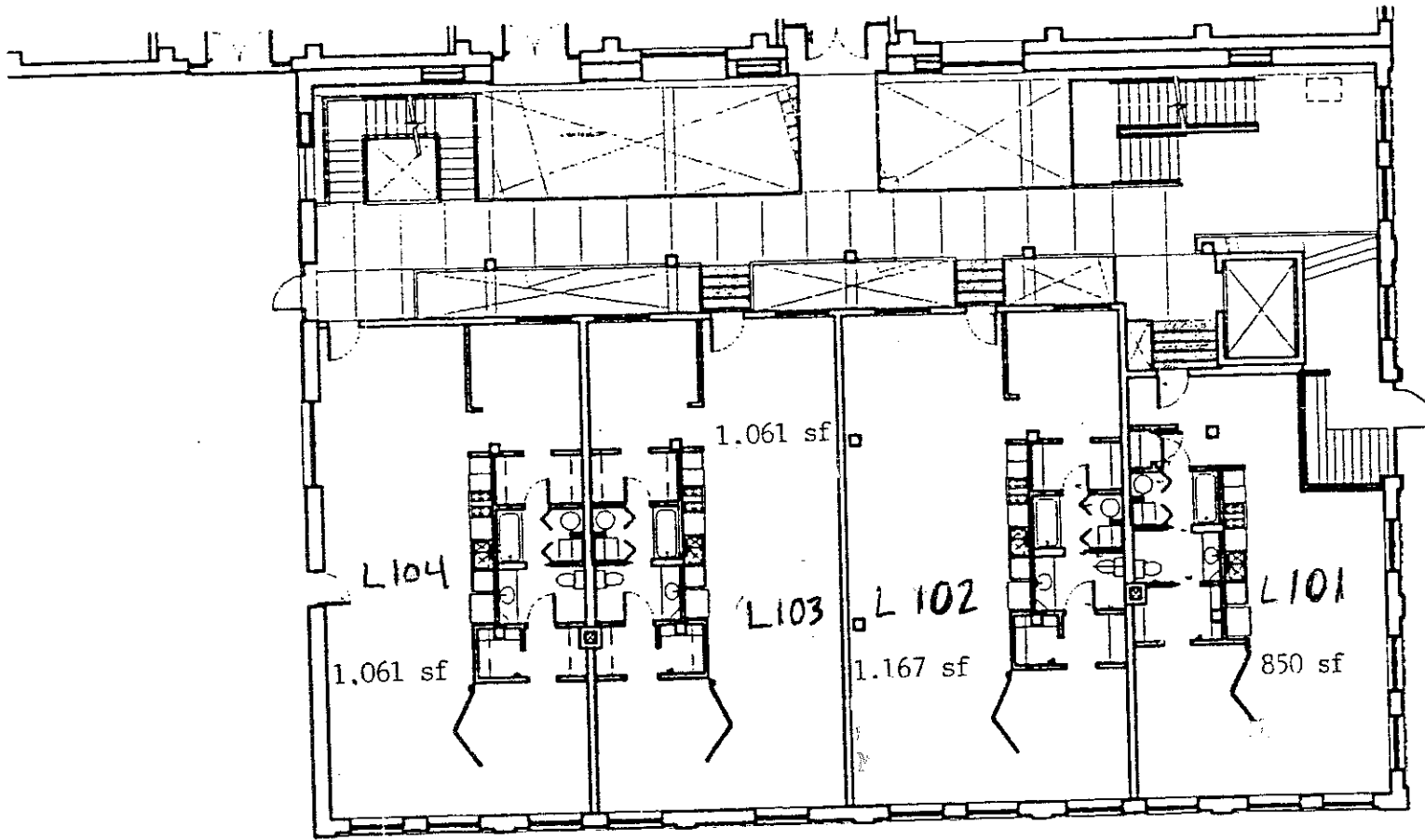


Majestic Stove Lofts
 2017 Washington Avenue, St. Louis, Missouri 63103
MAJESTIC STOVE LOFTS L.P.
ROBERT WOOD REALTY COMPANY

ISSUE DATE:
 7 JUNE 2004

Johannes Cohen
COLLABORATIVE
 Architecture Planning
 Interior Design
 Landscape Design

6225 Dainier Blvd., St. Louis, MO 63130
 Phone: 314.723.4545 Fax: 314.723.3060
 Email: jcohen@johannes-cohen.com



SECOND FLOOR PLAN - LEAVITT BOX

Scale: 1/16" = 1'-0"



Majestic Stove Lofts

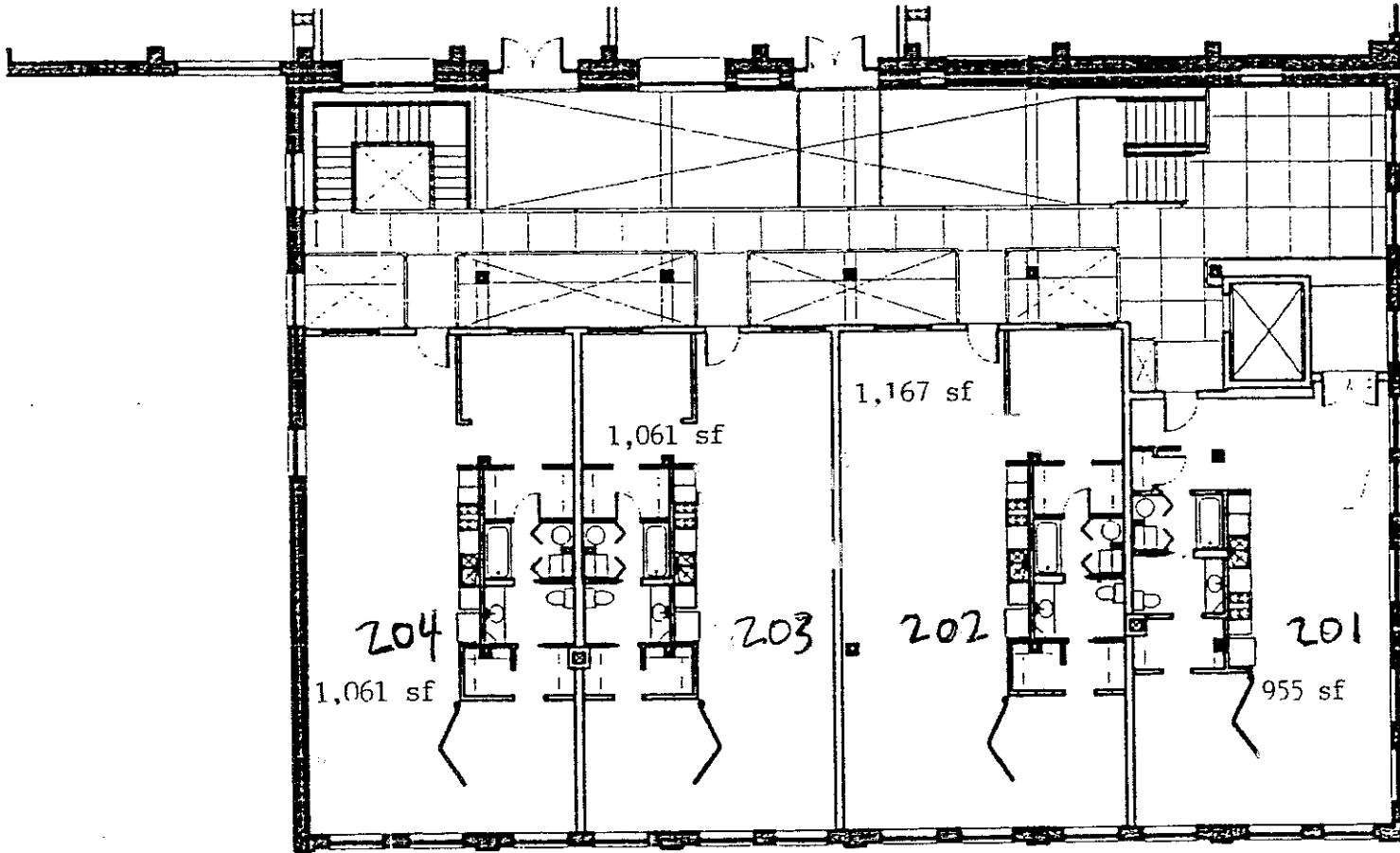
2017 Washington Avenue, St. Louis, Missouri 63103
 MAJESTIC STOVE LOFTS L.P.
 ROBERT WOOD REALTY COMPANY

Johannes Cohen

GO LABORATIVE
 Architecture Planning
 Interior Design
 Landscape Design

6225 Delmar Blvd., St. Louis, MO 63130
 Phone: 314.725.4565 Fax: 314.725.3066
 Email: jccard@johannes-cohen.com

ISSUE DATE:
 7 JUNE 2004
 2



THIRD FLOOR PLAN - LEAVITT BOX

Scale: 1/16" = 1'-0"



Majestic Stove Lofts

2017 Washington Avenue, St. Louis, Missouri 63103
 MAJESTIC STOVE LOFTS L.P.
 ROBERT WOOD REALTY COMPANY

Johannes Cohen

COLLABORATIVE
 Architecture Planning
 Interior Design
 Landscape Design

6225 Delmar Blvd., St. Louis, MO 63130
 Phone: 314.725.4565 Fax: 314.725.3060
 Email: johanc@johannes-cohen.com

ISSUE DATE
 7 JUNE 2004
 3